

02 - Cherry Tree Lane (Part 1)

Presto (♩ = 140)

[DIALOGUE]

(BERT)

1 2-4 3 5-12 8 13-16 4 17-20 4

roo.

MRS. BRILL:

21 22 23

Kat - ie Nan-na's gone, and is it an - y won-der, dri ven half-de-men - ted by your

WINIFRED:

24 25 26

chil - dren's pranks? Do you real - ly think I made an - oth - er blun - der?

27 28 29

What on earth am I to say to Mis - ter Banks?

WINIFRED:

30 *mf* 31 32 33

George, dear, I'm feel-ing so be - left, dear. An-oth-er nan-ny's

34 35 36 37

left, dear. Ev-'ry nan-ny goes. We're un-luck-y I sup-pose.

JANE, MICHAEL,
MRS. BRILL, ROB AY:

Poco a poco rit.

GEORGE: Nonsense!

GEORGE:

38 39 40 41 42

We are ne-ver going to find the per-fect nan - ny!

Pre-

GEORGE
START

Steady (♩ = 120)



ci-sion and or-der, that's all that I ask. The run-ning of a house-hold, a



straight-for-ward task. The child-ren, the ser-vants are all your do-main whilst

GEORGE: Coat! The simple truth is you've engaged six nannies in the last four months, and they've all been unqualified disasters!



I re-main the sov-'reign of Cher-ry Tree Lane. A

(♩ = 120)



nan-ny should go-vern. A nan-ny should rule. A nan-ny is a pa-ra-gon who



suf-fers no fool. A nan-ny's a stal-wart. Our child-ren would gain by

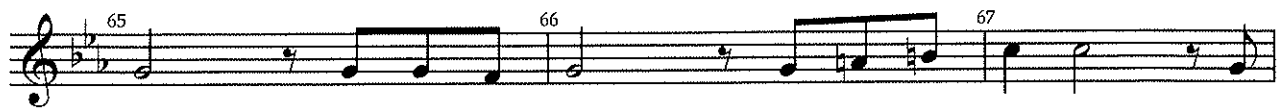
WINIFRED: Of course George, but...



hav-ing such a nan-ny in Cher-ry Tree Lane. So take con-



trol of sit-u-a-tions. Show your au-tho-ri-ty when in-ter-view-ing



staff. You know your role, they know their sta-tions. Ef-

[DIALOGUE] 4

fi - cien-cy and fore-thought cut the jobs in half.

[DIALOGUE] 2 3

MRS. BRILL: *mf* **START**

ROBERTSON AY: *mf* **START**

Pre-

Pre-

83 84 85

cis-ion and or-der, he wants noth-ing less. Yes, and

cis-ion and or-der, he wants noth-ing less. It's like an ar-my bar-racks-

86 87 88

we're in the mess! No won-der the nan-nies are driv-en in-sane. We're

No won-der the nan-nies are driv-en in-sane. We're

89 90 91

liv - ing in a mad-house in Cher-ry Tree Lane.

liv - ing in a mad-house in Cher-ry Tree Lane.

[DIALOGUE] 8 4 4 2

Poco più mosso

Rit.

92-99 100-103 104-107 108-109

Segue as one